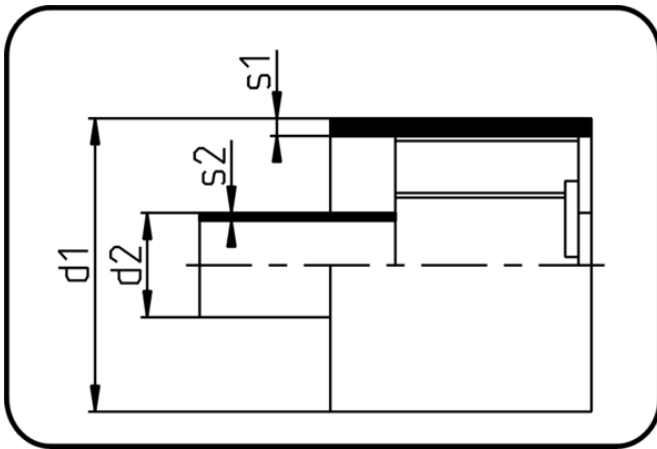


PP/PVDF Staggered Welding



Code: 795

- Double Containment Pipe
- extruded+assembled
- Staggered + E-socket-welding
- PP/PVDF

Dimension	Code	Detail	SDR1	SDR2	s1 mm	s2 mm	d1 mm	d2 mm	Weight
90/32	81.795.9032.72	90/32 SDR17,6/21	17,6	21	5,1	2,4	90	32	1.84
125/63	81.795.1263.72	125/63 SDR17,6/21	17,6	21	7,1	3	125	63	3.79
160/90	81.795.1690.73	160/90 SDR17,6/33	17,6	33	9,1	2,8	160	90	5.88
200/110	81.795.2011.73	200/110 SDR17,6/33	17,6	33	11,4	3,4	200	110	9
280/160	81.795.2816.73	280/160 SDR17,6/33	17,6	33	15,9	4,9	280	160	17.74