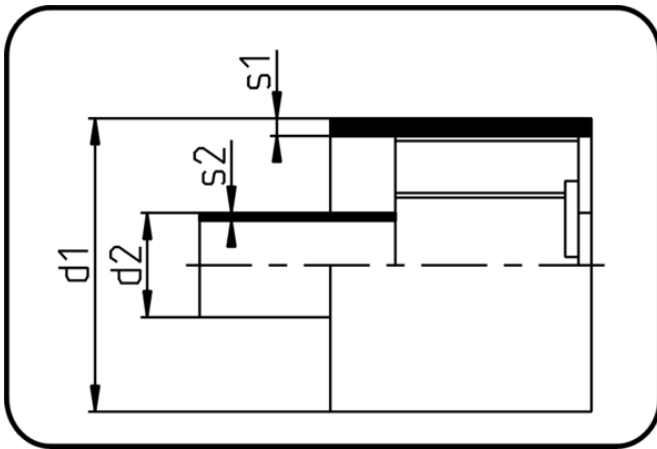


PE/PP Staggered Welding



Code: 795

- Double Containment Pipe
- extruded+assembled
- Staggered + E-socket-welding
- HDPE/PP

Dimension	Code	Detail	SDR1	SDR2	s1 mm	s2 mm	d1 mm	d2 mm	Weight
90/32	83.795.9032.71	90/32 SDR17,6/11	17,6	11	5,1	2,9	90	32	1.67
125/63	83.795.1263.71	125/63 SDR17,6/11	17,6	11	7,1	5,8	125	63	3.7
160/90	83.795.1690.71	160/90 SDR17,6/11	17,6	11	9,1	8,2	160	90	6.4
200/110	83.795.2011.71	200/110 SDR17,6/11	17,6	11	11,4	10	200	110	9.8
280/160	83.795.2816.71	280/160 SDR17,6/11	17,6	11	15,9	14,6	280	160	19.6